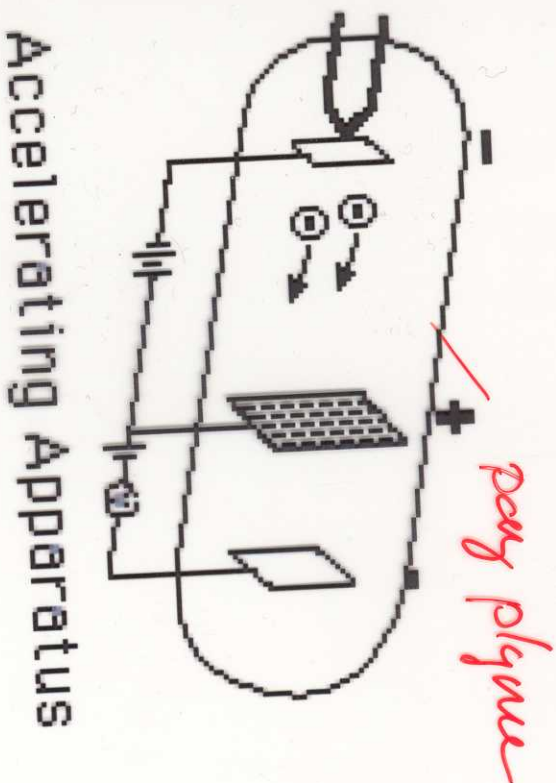
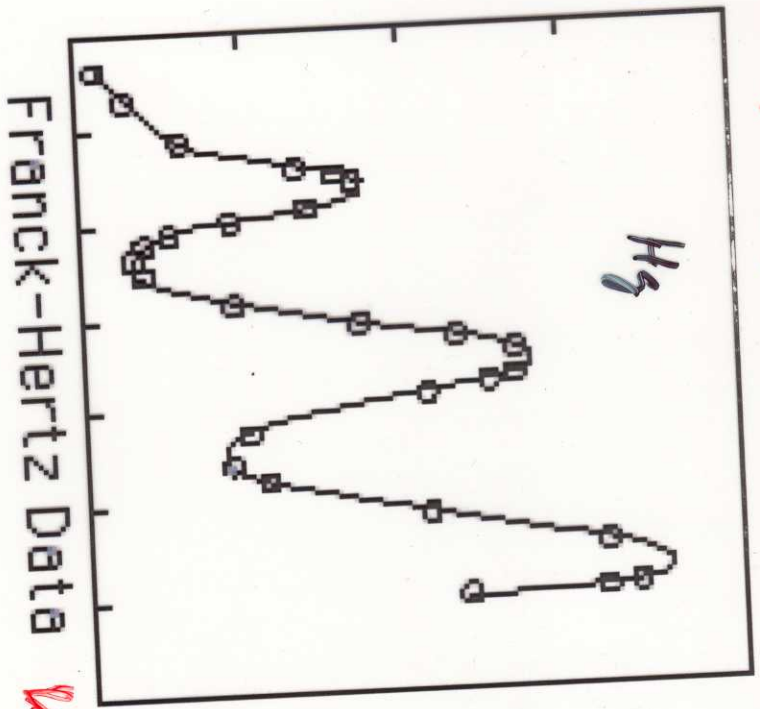


FRANCKOV - HEERTOV EXPERIMENT



I



*Nobel prize
in physics,
1925

- Franck's experiment e^-
- He experiment e^-

$$\Delta E = \frac{1}{2m} (2p)^2 = \frac{4p^2}{2m} = 4 \frac{m}{h} \left(\frac{p^2}{2m} \right)$$

$$\frac{\Delta E}{E} = 4 \frac{m}{M} = \frac{1}{2000.200} = 10^{-5}$$